

# CELTIC KNOT SHAWL to Crochet

Designed by Doris J. Chan courtesy of Caron Yarn International.




The motif featured in this shawl is taken from a book of Celtic knot designs and symbolizes the interconnectedness between people and eternal friendship. The “knot” is depicted in bold, treble crochet filet crochet.

■■■■□ INTERMEDIATE

**Finished Size:** 78" (198 cm) across wingtips and 28" (71 cm) deep at back

## MATERIALS

Caron® Simply Soft® (100% Acrylic)   
[6 ounces, 330 yards  
(170 grams, 302 meters) per skein]:  
# 9705 Sage - 3 skeins  
Crochet hook, size I-9 (5.5 mm) **or** size  
needed for gauge

**GAUGE:** In tr filet,  
3 blocks and 3 tr rows = 2<sup>1</sup>/<sub>2</sub>"  
(6.25 cm),  
In cluster stitch for Wings,  
2 repeats and 4 rows = 4" (10 cm)

BE SURE TO CHECK YOUR GAUGE

**Note:** Filet square will stretch slightly in width when blocked.

## BACK

**Row 1** (Foundation row - Right side): Ch 5 (counts as first tr), YO twice, insert hook in 2 loops of 5th ch from hook, YO and pull up a loop, YO and draw through one loop on hook to form the “beginning chain”, (YO and draw through 2 loops on hook) 3 times to form the tr, ★ YO twice, insert hook in ch under 2 strands at base of tr, YO and pull up a loop, YO and draw through one loop on hook, (YO and draw through 2 loops on hook) 3 times; repeat from ★ for a total of 103 tr (34 blocks).

**Note:** If you are not comfortable with the foundation row of adding on tr, then use the alternate construction for Row 1 as follows: Ch 107; tr in 6<sup>th</sup> ch from hook (5 skipped chs counts as first tr) and in each ch across: 103 tr (34 blocks).

**Note:** Loop a short piece of yarn around any stitch to mark Row 1 as **right** side and top edge.

**Row 2:** Ch 5 (counts as first tr), turn; tr in next tr and in each tr across.

**Row 3:** Ch 5, turn; tr in next 36 tr, (ch 3, skip next 2 tr, tr in next tr) 9 times, ch 3, skip next 2 tr, tr in next tr and in each tr across: 24 blocks and 10 spaces.

**Rows 4-34:** Follow filet chart.

Finish off.

## CHART STITCHES

### BLOCK OVER BLOCK

Tr in next 3 tr.

### BLOCK OVER SPACE

2 Tr in next ch-3 sp, tr in next tr.

### SPACE OVER BLOCK

Ch 3, skip next 2 tr, tr in next tr.

### SPACE OVER SPACE

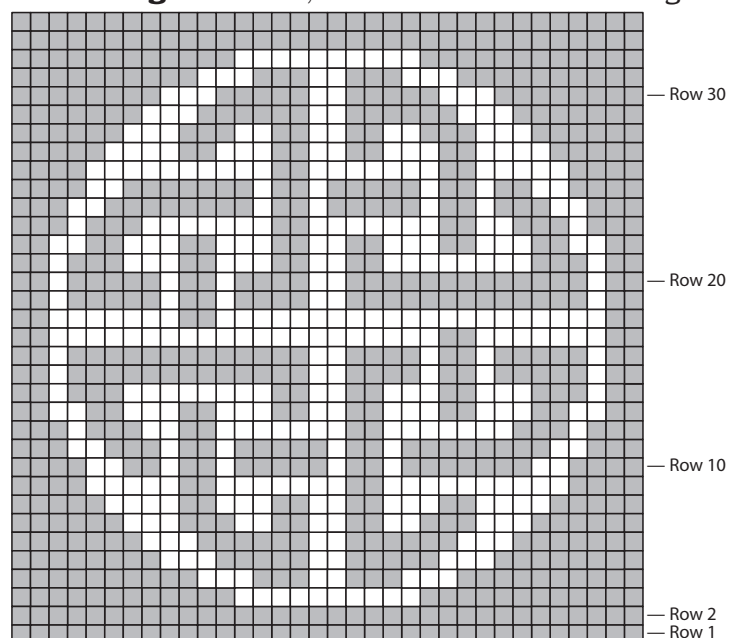
Ch 3, tr in next tr.

## KEY

■ - block (3 tr)

□ - space (ch 3, tr)

On **right** side rows, work chart from right to left.  
On **wrong** side rows, work chart from left to right.



**TIP:** If you chain loosely or tightly, you may want to make adjustments in the number of stitches in your turning chain or in the filet chain-space to keep the blocks as square as possible

## WINGS STITCH GUIDE

### BEGINNING CLUSTER (*uses one st*)

★ YO twice, insert hook in st indicated, YO and pull up a loop, (YO and draw through 2 loops on hook) twice holding back last loop of tr; repeat from ★ once **more** (3 loops on hook), YO and draw through all 3 loops on hook.

### CLUSTER (*uses one sp*)

★ YO twice, insert hook in sp indicated, YO and pull up a loop, (YO and draw through 2 loops on hook) twice holding back last loop of tr; repeat from ★ 2 times **more** (4 loops on hook), YO and draw through all 4 loops on hook.

### PICOT CLUSTER (*uses one sp*)

Work Cluster, ch 3, retrace the path of the loop that closes the cluster by inserting hook through all of the last 4 loops of cluster, YO and draw through all 5 loops on hook to slip st.

**Note:** The foundation row becomes the neck edge. Wings are worked into the end of rows on the Back, shaping the bottom edge and working Picot Clusters to form an edging.

**Row 1:** Join yarn with slip st in first ch on foundation row; ch 5, work beginning Cluster in same ch, ch 7, sc in first row, ★ ch 1, skip next row, work Cluster in next row, ch 7, sc in next row; repeat from ★ across: 12 Clusters.

**Row 2:** Ch 5, turn; (work Picot Cluster, ch 5, sc) in next ch-7 sp (for edging), ★ ch 1, (work Cluster, ch 7, sc) in next ch-7 sp; repeat from ★ across working last sc in top of beginning Cluster.

**Row 3:** Ch 5, turn; (work Cluster, ch 7, sc, ch 1) in each ch-7 sp across to last ch-7 sp before edging, work Cluster in last ch-7 sp, ch 7, sc in top of next Cluster: one less Cluster.

**Rows 4-23:** Repeat Rows 2 and 3, 10 times until one Cluster remains.

**Row 24:** Ch 5, turn; work Picot Cluster in ch-7 sp, ch 5, sc in top of beginning Cluster; finish off: 12 Picot Clusters along shaped edge of Wing.

Make Wing on other side of Back in same manner.

Weave in yarn ends.

Block shawl (very important).

## ABBREVIATIONS

ch(s)	chain(s)
cm	centimeters
mm	millimeters
sc	single crochet(s)
sp(s)	space(s)
st(s)	stitch(es)
tr	treble crochet(s)
YO	yarn over

★ — work instructions following ★ as many **more** times as indicated in addition to the first time.

( ) or [ ] — work enclosed instructions **as many** times as specified by the number immediately following **or** work all enclosed instructions in the stitch or space indicated **or** contains explanatory remarks.

colon (:) — the number(s) given after a colon at the end of a row or round denotes the number of stitches or spaces you should have on that row or round.

We have made every effort to ensure that these instructions are accurate and complete. We cannot, however, be responsible for human error, typographical mistakes, or variations in individual work.

Copyright 2007 by FriendshipShawl.org

This Friendship Shawl pattern is free. It may be copied for personal use but is not intended for commercial purposes.